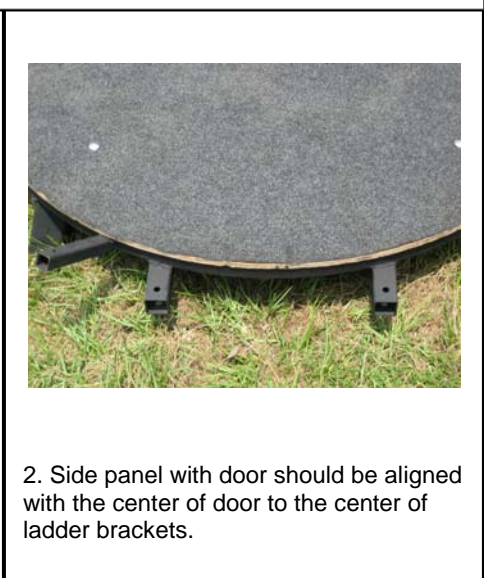
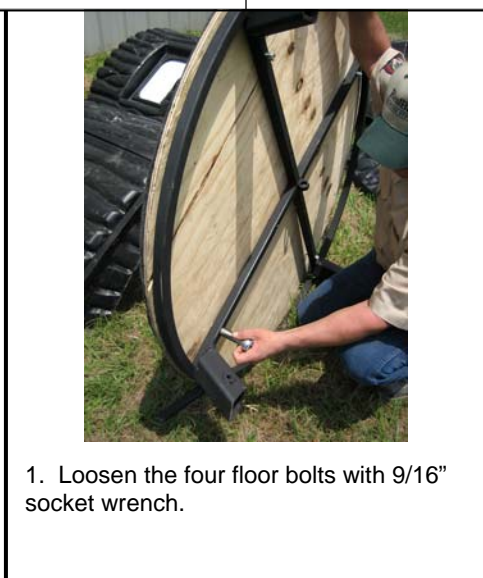
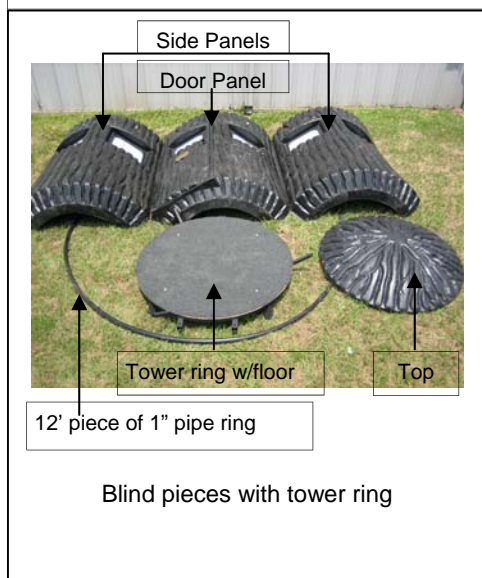


GBX-5 Blind Assembly Instructions

<p style="text-align: center;"><u>Parts List</u></p> <p>1—door panel 2—side panels 1—top 1—tower ring w/floor 1—12' piece of 1" pipe ring 59—#8 x 3/4" SEM screws 50—#8 speed nuts 50—screw caps 2—double clamps 4—single clamps 3—2" x 5/16" bolts 3—5/16" lock washers 3—5/16" flat washers 3—5/16" nuts 2—1 1/4" Phillips head tapping screw 2—#2 x 1/2" self drill screw 3—1" plastic caps (black)</p> <p style="text-align: center;"><u>Tools Needed</u></p> <p>Power drill #8 phillips head for drill 1/8" drill bit 5/16" drill bit 1/2" socket 9/16" socket Ratchet wrench Pliers</p>		<p>59 #8 x 3/4" SEM screws</p> <p>50 #8 speed nuts 50 screw caps</p> <p>1" EMT Strap (single)</p> <p>1" EMT Strap (double)</p> <p>2" x 5/16" bolts</p> <p>5/16" lock washers 5/16" nuts</p> <p>1 1/4" Philips head tapping screw</p> <p>#2 x 1/2" self drill screw</p> <p>1" plastic caps</p>
--	---	---





3. Insert bottom lip of blind between 1/2" plywood floor & tower ring.



4. With door centered with the ladder brackets side lip of side panel should line up with tower ring support bracket.



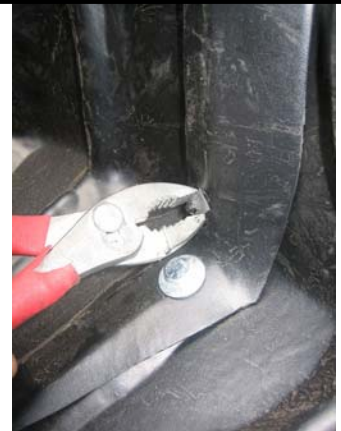
5. Install a second panel between floor and ring same as door panel.



6. Overlap 1" wide seams. Locate bottom dimple in seam for screw location. Drill with 1/8" drill bit.



7. Use Phillips head driver to run #8-32 x 3/4" SEM screw through drilled holes.



8. #8 Speed nut should be placed over screw as it passes through inside lip as its being tightened from outside.



9. Align seams at top of panel & drill.



10. Fasten with #8-32 x 3/4" SEM screw and speed nut.



11. Drill and screw the remainder of the seams together at the dimple locations starting at the bottom and working up. Repeat with 3rd panel.



12. Install center support 1" pipe ring.



13. Start at the left hand side of door facing outward. Align ring with bottom of adjacent window. Place double clamp in recessed area over end of pipe ring.



14. Drill clamp holes from inside with 1/8" drill bit.



15. Fasten clamp with 2 #8-32 x 3/4" SEM screws and speed nuts.



16. Pipe ring should extend past clamp about 1/2". Fasten with #2 x 1/2" self drill screw through center of clamp in to pipe ring.



17. Install single clamp between the remaining windows keeping pipe aligned with the bottom of the windows.



18. Drill from inside and screw from outside with #8-32 x 3/4" SEM screw.



19. Use speed nut on inside over clamp.



20. Installation of pipe ring.



21. Double clamp should be located in recess to the right of door and fastened with pipe level with bottom of window.



22. While slightly pushing on end of pipe to eliminate any slack, fasten end of pipe through clamp with #2 x 1/2" self drill screw to hold in place.



23. Install top over horizontal seam.



24. Align a dimple in top lip with side seam. Drill with 1/8" bit and fasten with #8-32 x 3/4" SEM screw & speed nut. Repeat at all dimple locations.



25. Lay blind on its side.



26. Fasten bottom blind lip to plywood floor with (3) #8 -32 x 3/4" SEM screws in each panel.



27. Tighten floor bolts with 9/16" socket wrench.



28. While blind is still on its side using hole in ring support bracket as a guide, drill a 5/16" hole through bottom seam.



29. Fasten bracket to blind with 2" x 5/16" bolt inserted from the outside and 5/16" flat washer, 5/16" lock washer and 5/16" nut on inside. Repeat on other two support brackets. Install (3) 1" plastic caps in ends of support brackets.